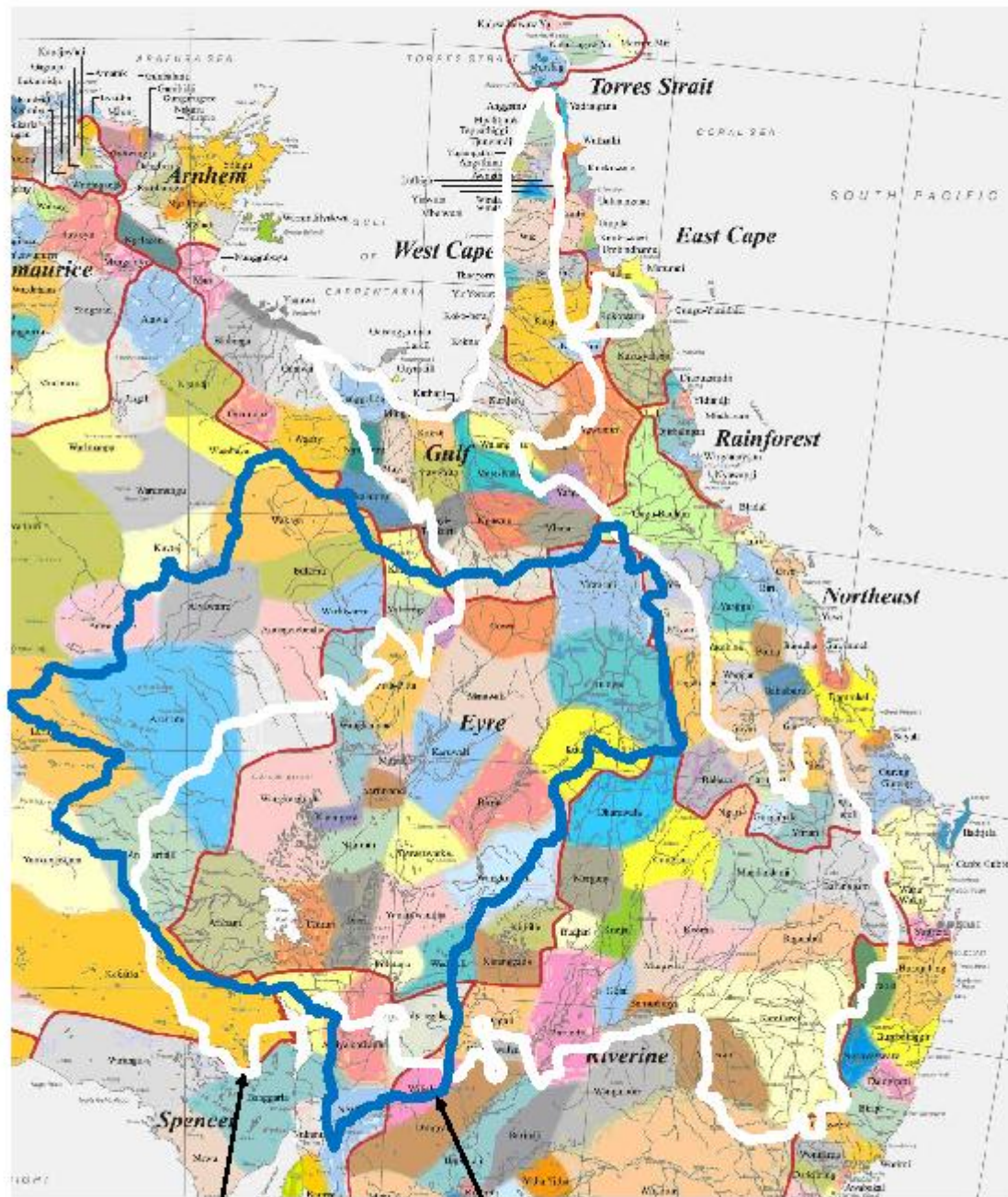


A general outline of basic traditional procedures is sought for each group in the LEB, and any related groups, so that coordination can be discussed



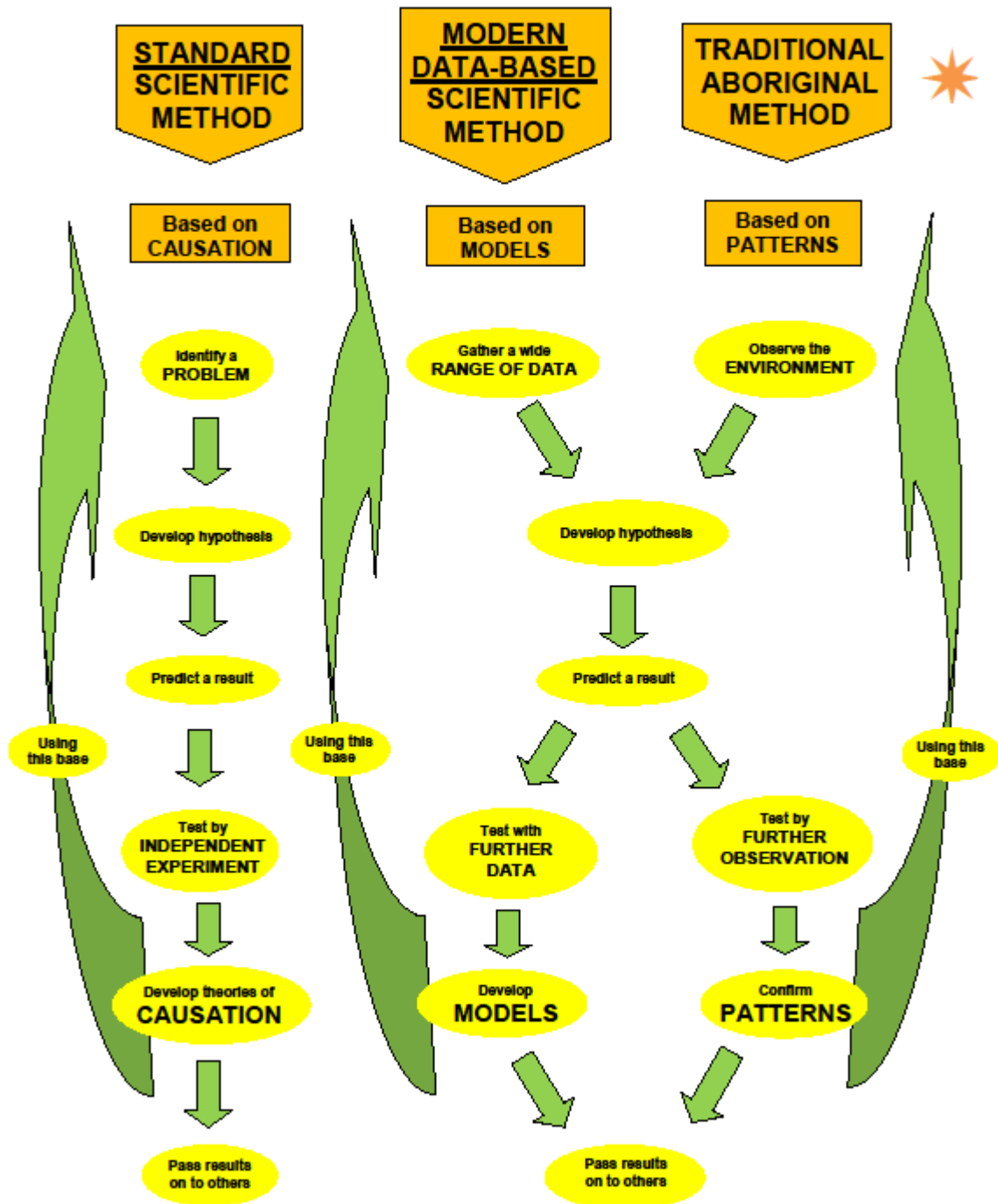
Great Artesian Basin*

Lake Eyre Basin*

*All boundaries approximate only (Horton's map, etc.)

THE SCIENTIFIC METHOD

(Modern science is catching up with the traditional Aboriginal method but it's not there yet)



Derian Hillis, 18 Sep 2013
ListenToUs@five.com

WHAT IS A CONSTITUTION?

An agreement on how we will work together

In Wikipedia's *Principles of Constitutional Design*, 19th century intellectual [Orestes Brownson](http://en.wikipedia.org/wiki/Constitution#Principles_of_constitutional_design) described three "constitutions", which together form the whole: (http://en.wikipedia.org/wiki/Constitution#Principles_of_constitutional_design)

1. **The first**, the constitution of **nature**, includes all of what was called "natural law"
2. **The second**, the constitution of **society**, is an unwritten and commonly understood set of rules for the society formed by a social contract before it establishes a government, for which it establishes:
3. **The third**, a constitution of **government**.

Each constitution must be consistent with and derive its authority from the ones before it – i.e. it must follow the sequence:



Western society has lost track of this basic meaning

This constitution for the Lake Eyre Basin is a restoration of the true meaning of a constitution, to which Aboriginal culture is uniquely suited.

A constitution should list:

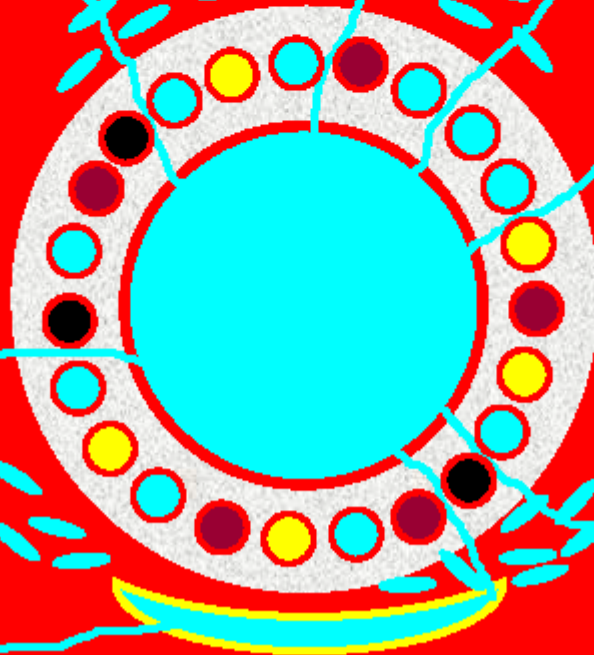
- 1 Key physical aspects and the component parts, and their management.
- 2 The governing organisation
 - a. Structure and relationship with the component parts.
 - b. Laws & distribution of power, including natural and social needs.
 - c. Management structures, e.g. whether total or in parts.
 - d. Accountability and method of conflict resolution.
 - e. Relationship with external bodies, e.g. mainstream society.
- 3 Fundamental rights and written & oral rules.
- 4 Method of appointment to positions and their roles and responsibilities.
- 5 Procedures for implementing, questioning and amending the constitution.

The aim is to coordinate the traditional management activities of the Aboriginal societies in the Lake Eyre Basin and its connected areas, with assistance from the mainstream, particularly science, as required.

Darian Hiles, 18 Sep 2013
ListenToUs@live.com

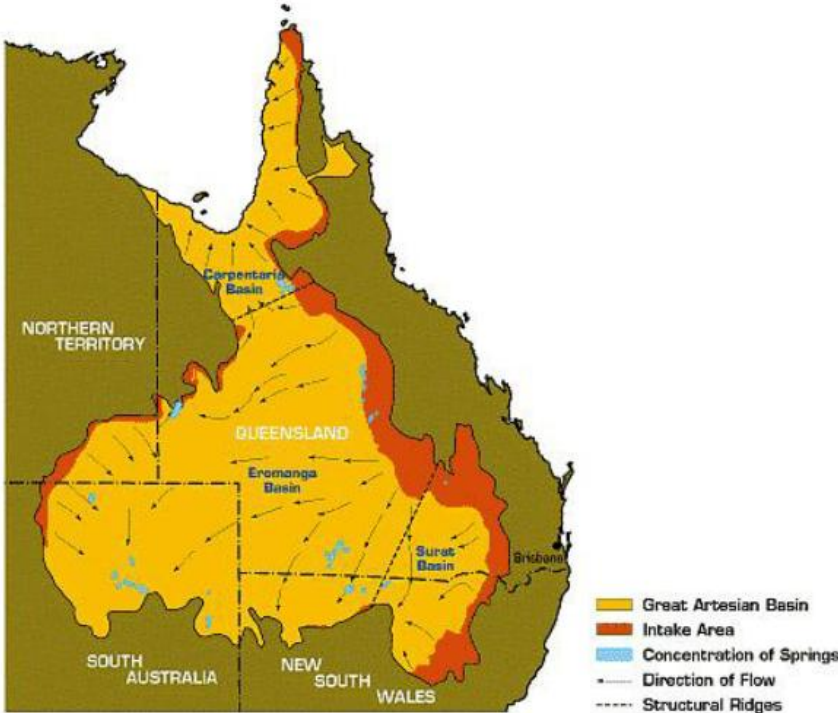
LISTEN TO US

UNDERSTAND our management of the land
LEARN the value of our knowledge
ENGAGE with traditional culture
START the journey
SEE the results



A Constitution for the Land and a Recognition of Traditional Aboriginal Knowledge. ListenToUs@live.com

GAB IN-TAKE AREA



http://www.google.com.au/imgres?imgurl=http://www.diamantina-tour.com.au/outback_info/great_arterasian_basin/